

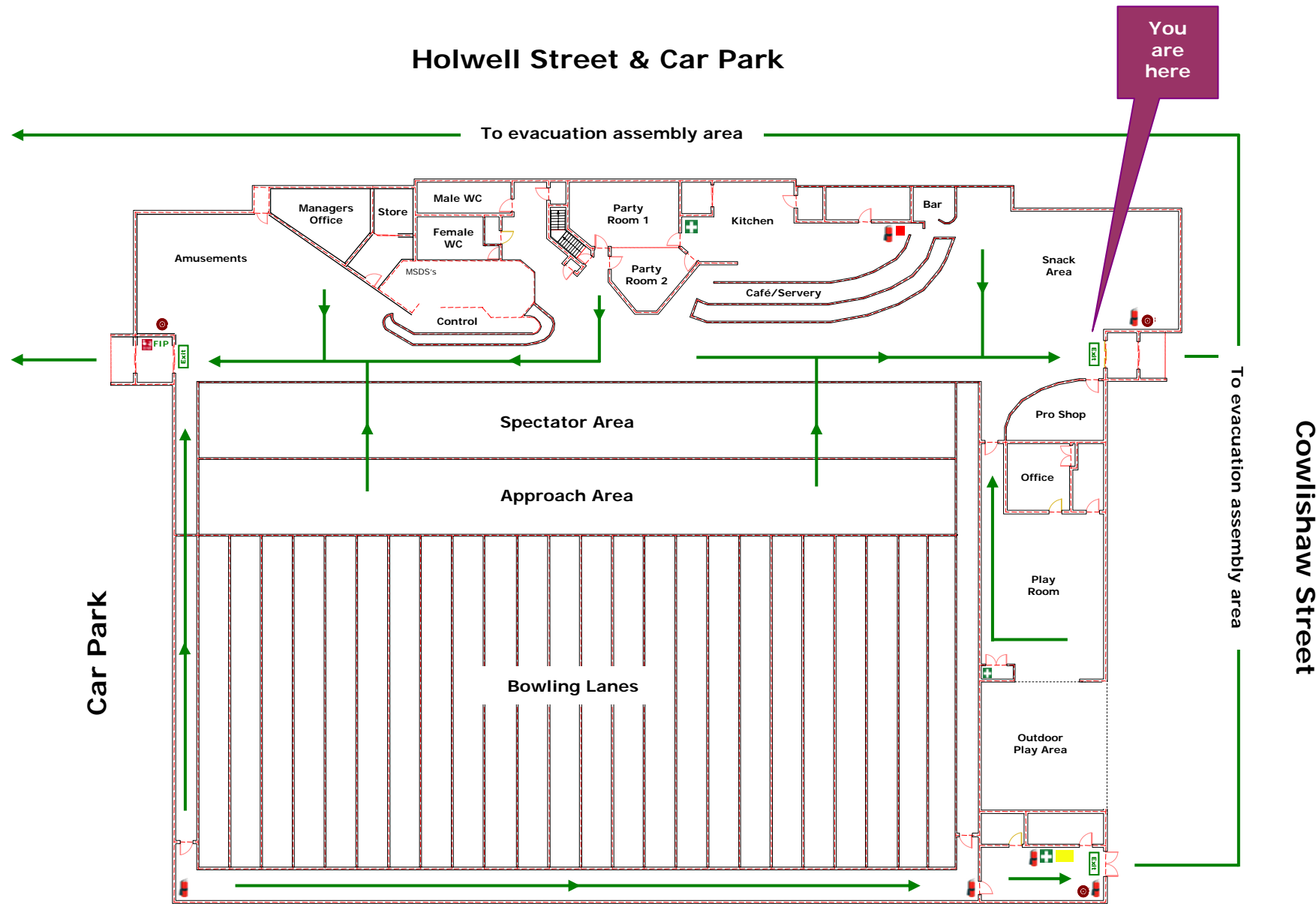
# EMERGENCY EVACUATION PLAN

## AMF Bowling Tuggeranong

### To Evacuation Assembly Area



Grassy area adjacent to Pittman Street



### In case of fire:

#### Remove people from danger

- Yourself
- Other staff and visitors

#### Raise the Alarm

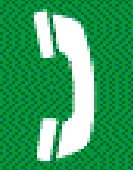
- Notify your Chief Warden
- If after hours, call 000

#### Contain the fire

- To the room or space of origin
- Close doors behind you

#### Extinguish or Evacuate

- Follow the Chief Warden's instructions
- Go to the assembly area
- Only attempt to extinguish fire if it's safe



**Dial 000**  
**for all**  
**emergency**  
**services**

#### Legend:

Fire Extinguisher	Hose Reel	Gas bottles	FIP Fire Indicator Panel
Fire Hydrant	Evacuation route	Hazchem	Break Glass Alarm
Fire Blanket	First aid kit	Assembly area	

# EMERGENCY EVACUATION PLAN

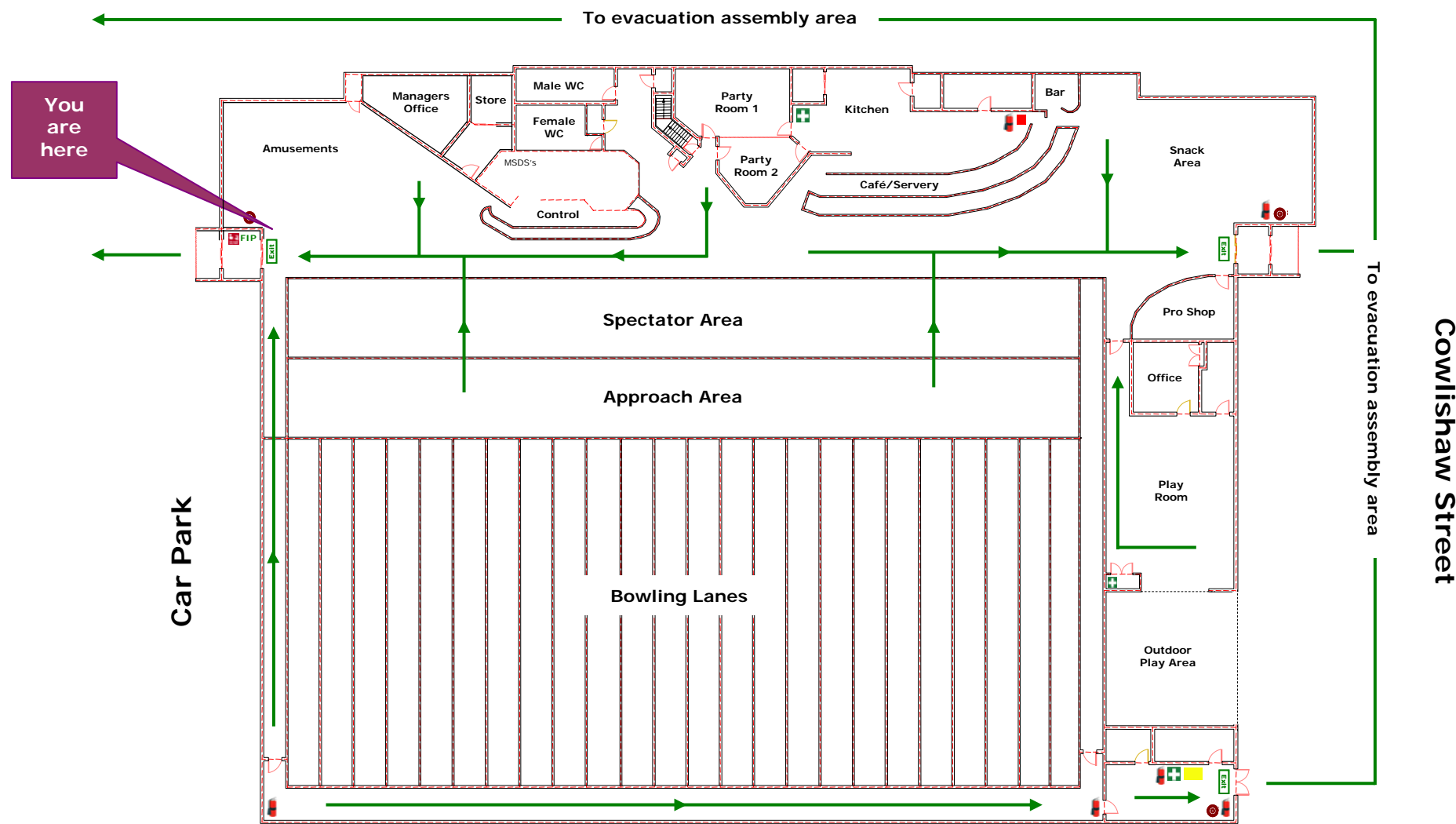
## AMF Bowling Tuggeranong

### To Evacuation Assembly Area



Grassy area adjacent to Pittman Street

### Holwell Street & Car Park



### In case of fire:

#### Remove people from danger

- Yourself
- Other staff and visitors

#### Raise the Alarm

- Notify your Chief Warden
- If after hours, call 000

#### Contain the fire

- To the room or space of origin
- Close doors behind you

#### Extinguish or Evacuate

- Follow the Chief Warden's instructions
- Go to the assembly area
- Only attempt to extinguish fire if it's safe



**Dial 000**  
**for all**  
**emergency**  
**services**

#### Legend:

Fire Extinguisher	Hose Reel	Gas bottles	FIP Fire Indicator Panel
Fire Hydrant	Evacuation route	Hazchem	Break Glass Alarm
Fire Blanket	First aid kit	Assembly area	

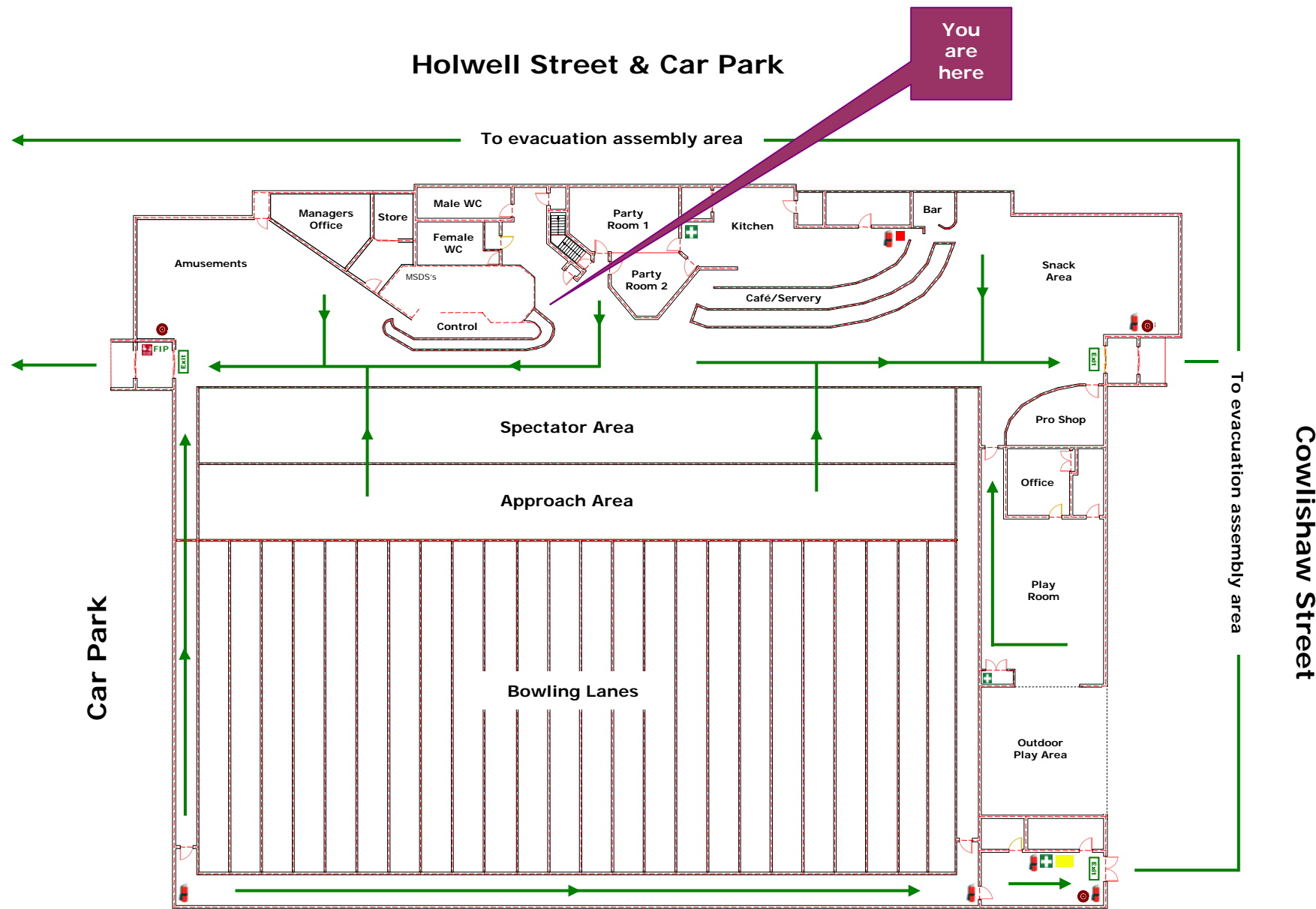
# EMERGENCY EVACUATION PLAN

## AMF Bowling Tuggeranong

### To Evacuation Assembly Area



Grassy area adjacent to Pittman Street



### In case of fire:

#### Remove people from danger

- Yourself
- Other staff and visitors

#### Raise the Alarm

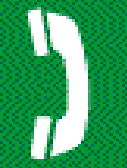
- Notify your Chief Warden
- If after hours, call 000

#### Contain the fire

- To the room or space of origin
- Close doors behind you

#### Extinguish or Evacuate

- Follow the Chief Warden's instructions
- Go to the assembly area
- Only attempt to extinguish fire if it's safe



**Dial 000**  
**for all**  
**emergency**  
**services**

#### Legend:

Fire Extinguisher	Hose Reel	Gas bottles	FIP Fire Indicator Panel
Fire Hydrant	Evacuation route	Hazchem	Break Glass Alarm
Fire Blanket	First aid kit	Assembly area	

# EMERGENCY EVACUATION PLAN

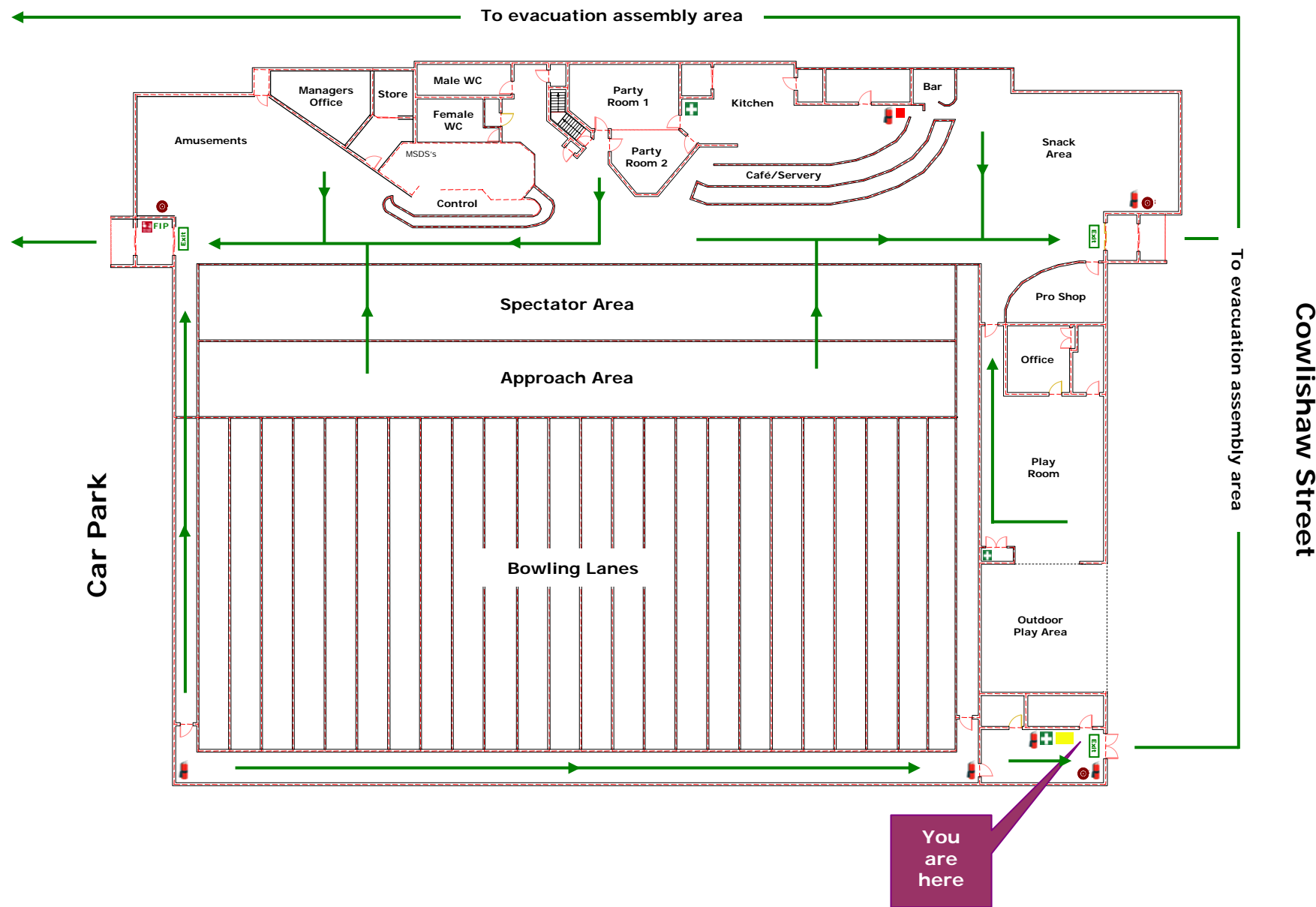
## AMF Bowling Tuggeranong

### To Evacuation Assembly Area



Grassy area adjacent to Pittman Street

### Holwell Street & Car Park



Legend:

	Fire Extinguisher		Hose Reel		Gas bottles		FIP Fire Indicator Panel
	Fire Hydrant		Evacuation route		Hazchem		Break Glass Alarm
	Fire Blanket		First aid kit		Assembly area		

### In case of fire:

#### Remove people from danger

- Yourself
- Other staff and visitors

#### Raise the Alarm

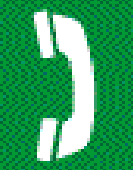
- Notify your Chief Warden
- If after hours, call 000

#### Contain the fire

- To the room or space of origin
- Close doors behind you

#### Extinguish or Evacuate

- Follow the Chief Warden's instructions
- Go to the assembly area
- Only attempt to extinguish fire if it's safe



**Dial 000**  
**for all**  
**emergency**  
**services**

# EMERGENCY EVACUATION PLAN

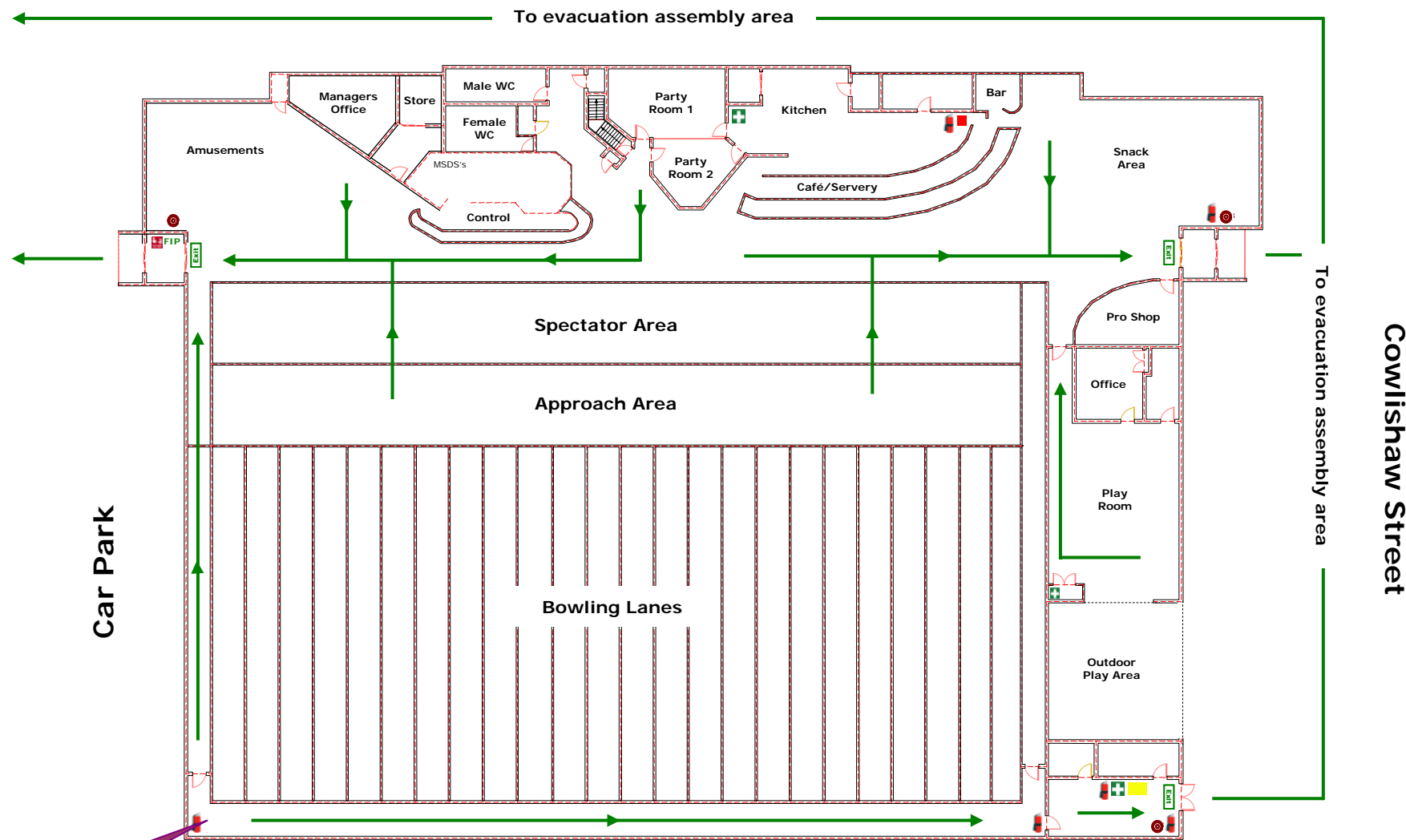
## AMF Bowling Tuggeranong

### To Evacuation Assembly Area



Grassy area adjacent to Pittman Street

### Holwell Street & Car Park



You are here

Legend:			
	Fire Extinguisher		Hose Reel
	Fire Hydrant		Gas bottles
	Fire Blanket		Hazchem
	First aid kit		Assembly area
	Evacuation route		FIP Fire Indicator Panel
	Break Glass Alarm		

### In case of fire:

#### Remove people from danger

- Yourself
- Other staff and visitors

#### Raise the Alarm

- Notify your Chief Warden
- If after hours, call 000

#### Contain the fire

- To the room or space of origin
- Close doors behind you

#### Extinguish or Evacuate

- Follow the Chief Warden's instructions
- Go to the assembly area
- Only attempt to extinguish fire if it's safe



**Dial 000**  
**for all**  
**emergency**  
**services**